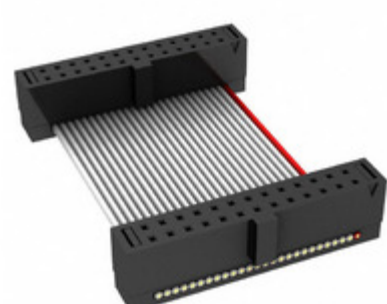


**FFSD-13-D-16.93-01-N**



**Part Number:** [FFSD-13-D-16.93-01-N](#)  
**Manufacturer:** [Samtec, Inc.](#)  
**Description:** .050 X .050 C.L. FEMALE IDC ASSE  
**Data sheet:** [FFSD Series Datasheet](#)  
[FFSD-xx-x-xx.xx-01-x-x-zzz Drawing](#)

**RoHS Status:** Lead free / RoHS Compliant  
**Ship From:** Hong Kong  
**Shipment Way:** DHL/Fedex/TNT/UPS/EMS

Images are for reference only.  
 See Product Specifications for product details.  
 Buy **FFSD-13-D-16.93-01-N** with confidence from  
 Component-World.HK, 1 Year Warranty

[Request For Quotation](#)

**PRODUCT PARAMETER**

<b>Part Number</b>	FFSD-13-D-16.93-01-N	<b>Manufacturer</b>	<a href="#">Samtec, Inc.</a>
<b>Description</b>	.050 X .050 C.L. FEMALE IDC ASSE	<b>Lead Free Status / RoHS Status</b>	Lead free / RoHS Compliant
<b>Quantity Available</b>	6758 pcs	<b>Data sheet</b>	<a href="#">FFSD Series Datasheet</a> <a href="#">FFSD-xx-x-xx.xx-01-x-x-zzz Drawing</a>
<b>Category</b>	<a href="#">Cable Assemblies</a>	<b>Series</b>	*
<b>Manufacturer Standard Lead Time</b>	3 Weeks	<b>Lead Free Status / RoHS Status</b>	Lead free / RoHS Compliant
<b>Detailed Description</b>	Position Cable Assembly Rectangular		

Component-World.com is a Reliable Stocking Distributor of Electronic Components. We specialize in all Samtec, Inc. series electronic components. We have 6758 pieces of Samtec, Inc. FFSD-13-D-16.93-01-N in stock available now. Request a quote from electronics components distributor at Component-World.com, our sales team will contact you within 24 hours.

RFQ Email: [info@Components-World.com](mailto:info@Components-World.com)

**RELATED PRODUCTS**

	<b>Part#:</b> <a href="#">FFSD-13-D-17.00-01-N-D07</a> <b>Description:</b> .050 X .050 C.L. FEMALE IDC ASSE	<b>Manufacturers:</b> <a href="#">Samtec, Inc.</a>	<a href="#">RFQ</a>
	<b>Part#:</b> <a href="#">FFSD-13-D-16.75-01-N</a> <b>Description:</b> .050 X .050 C.L. FEMALE IDC ASSY	<b>Manufacturers:</b> <a href="#">Samtec, Inc.</a>	<a href="#">RFQ</a>
	<b>Part#:</b> <a href="#">FFSD-13-D-17.32-01-N</a> <b>Description:</b> .050 X .050 C.L. FEMALE IDC ASSE	<b>Manufacturers:</b> <a href="#">Samtec, Inc.</a>	<a href="#">RFQ</a>
	<b>Part#:</b> <a href="#">FFSD-13-D-16.50-01-N</a> <b>Description:</b> .050 X .050 C.L. FEMALE IDC ASSE	<b>Manufacturers:</b> <a href="#">Samtec, Inc.</a>	<a href="#">RFQ</a>
	<b>Part#:</b> <a href="#">FFSD-13-D-16.00-01-N-R</a> <b>Description:</b> .050 X .050 C.L. FEMALE IDC ASSE	<b>Manufacturers:</b> <a href="#">Samtec, Inc.</a>	<a href="#">RFQ</a>
	<b>Part#:</b> <a href="#">FFSD-13-D-17.32-01-N-D10</a> <b>Description:</b> .050 X .050 C.L. FEMALE IDC ASSE	<b>Manufacturers:</b> <a href="#">Samtec, Inc.</a>	<a href="#">RFQ</a>
	<b>Part#:</b> <a href="#">FFSD-13-D-17.30-01-N</a> <b>Description:</b> .050 X .050 C.L. FEMALE IDC ASSE	<b>Manufacturers:</b> <a href="#">Samtec, Inc.</a>	<a href="#">RFQ</a>
	<b>Part#:</b> <a href="#">FFSD-13-D-17.00-01-N</a> <b>Description:</b> .050 X .050 C.L. FEMALE IDC ASSE	<b>Manufacturers:</b> <a href="#">Samtec, Inc.</a>	<a href="#">RFQ</a>
	<b>Part#:</b> <a href="#">FFSD-13-D-17.70-01-N</a> <b>Description:</b> .050 X .050 C.L. FEMALE IDC ASSE	<b>Manufacturers:</b> <a href="#">Samtec, Inc.</a>	<a href="#">RFQ</a>
	<b>Part#:</b> <a href="#">FFSD-13-D-16.54-01-N</a> <b>Description:</b> .050 X .050 C.L. FEMALE IDC ASSE	<b>Manufacturers:</b> <a href="#">Samtec, Inc.</a>	<a href="#">RFQ</a>
	<b>Part#:</b> <a href="#">FFSD-13-D-17.00-01-N-R</a> <b>Description:</b> .050 X .050 C.L. FEMALE IDC ASSE	<b>Manufacturers:</b> <a href="#">Samtec, Inc.</a>	<a href="#">RFQ</a>
	<b>Part#:</b> <a href="#">FFSD-13-D-17.50-01-N</a> <b>Description:</b> .050 X .050 C.L. FEMALE IDC ASSE	<b>Manufacturers:</b> <a href="#">Samtec, Inc.</a>	<a href="#">RFQ</a>
	<b>Part#:</b> <a href="#">FFSD-13-D-17.00-01-N-SR</a> <b>Description:</b> .050 X .050 C.L. FEMALE IDC ASSE	<b>Manufacturers:</b> <a href="#">Samtec, Inc.</a>	<a href="#">RFQ</a>
	<b>Part#:</b> <a href="#">FFSD-13-D-16.00-01-N-RW</a> <b>Description:</b> .050 X .050 C.L. FEMALE IDC ASSE	<b>Manufacturers:</b> <a href="#">Samtec, Inc.</a>	<a href="#">RFQ</a>
	<b>Part#:</b> <a href="#">FFSD-13-D-16.50-01-N-R</a> <b>Description:</b> .050 X .050 C.L. FEMALE IDC ASSE	<b>Manufacturers:</b> <a href="#">Samtec, Inc.</a>	<a href="#">RFQ</a>
	<b>Part#:</b> <a href="#">FFSD-13-D-16.50-01-N-RN1</a> <b>Description:</b> .050 X .050 C.L. FEMALE IDC ASSE	<b>Manufacturers:</b> <a href="#">Samtec, Inc.</a>	<a href="#">RFQ</a>
	<b>Part#:</b> <a href="#">FFSD-13-D-16.00-01-N-SR</a> <b>Description:</b> .050 X .050 C.L. FEMALE IDC ASSE	<b>Manufacturers:</b> <a href="#">Samtec, Inc.</a>	<a href="#">RFQ</a>
	<b>Part#:</b> <a href="#">FFSD-13-D-17.35-01-N</a> <b>Description:</b> .050 X .050 C.L. FEMALE IDC ASSE	<b>Manufacturers:</b> <a href="#">Samtec, Inc.</a>	<a href="#">RFQ</a>
	<b>Part#:</b> <a href="#">FFSD-13-D-16.55-01-N-SR</a> <b>Description:</b> .050 X .050 C.L. FEMALE IDC ASSE	<b>Manufacturers:</b> <a href="#">Samtec, Inc.</a>	<a href="#">RFQ</a>
	<b>Part#:</b> <a href="#">FFSD-13-D-16.20-01-N</a> <b>Description:</b> .050 X .050 C.L. FEMALE IDC ASSE	<b>Manufacturers:</b> <a href="#">Samtec, Inc.</a>	<a href="#">RFQ</a>

**Related keywords for FFSD-13-D-16.93-01-N**

<a href="#">Samtec, Inc. FFSD-13-D-16.93-01-N</a>	<a href="#">FFSD-13-D-16.93-01-N distributor</a>	<a href="#">FFSD-13-D-16.93-01-N supplier</a>	<a href="#">FFSD-13-D-16.93-01-N price</a>
<a href="#">FFSD-13-D-16.93-01-N download datasheet</a>	<a href="#">FFSD-13-D-16.93-01-N datasheet</a>	<a href="#">FFSD-13-D-16.93-01-N stock</a>	<a href="#">buy FFSD-13-D-16.93-01-N</a>
<a href="#">Samtec, Inc. FFSD-13-D-16.93-01-N</a>	<a href="#">Samtec Inc. FFSD-13-D-16.93-01-N</a>		